

# WILLIAMSBURG



WILLIAMSBURG-S/20

An innovative porcelain tile collection for walls and floors, with a modular design that can be combined in all kinds of different ways. With over 90 different patterns and a high degree of shade variation, it can be used to dress up settings of all sorts. The collection also comes in 5 different colours: red, brown, bone, silver and grey, in a 10x20cm format.

Novedosa colección porcelánica válida para pavimento y revestimiento. Su estructura modula y permite así múltiples patrones de colocación. Sus más de 90 gráficas diferentes y su acusado destono, hacen de WILLIAMSBURG una colección perfecta para todo tipo de espacios. Además se presenta en 5 tonos diferentes: Rojo, Marrón, Hueso, Silver y Gris en formato de 10x20 cm.



WILLIAMSBURG-M/20







# WILLIAMSBURG



19674 E. WILLIAMSBURG-R  
H20 (10x20cm) (3<sup>15</sup>/<sub>16</sub>x7<sup>7</sup>/<sub>8</sub>"<sup>o</sup>)



19676 E. WILLIAMSBURG-M  
H20 (10x20cm) (3<sup>15</sup>/<sub>16</sub>x7<sup>7</sup>/<sub>8</sub>"<sup>o</sup>)



19675 E. WILLIAMSBURG-H  
H20 (10x20cm) (3<sup>15</sup>/<sub>16</sub>x7<sup>7</sup>/<sub>8</sub>"<sup>o</sup>)



19672 E. WILLIAMSBURG-S  
H20 (10x20cm) (3<sup>15</sup>/<sub>16</sub>x7<sup>7</sup>/<sub>8</sub>"<sup>o</sup>)



19673 E. WILLIAMSBURG-G  
H20 (10x20cm) (3<sup>15</sup>/<sub>16</sub>x7<sup>7</sup>/<sub>8</sub>"<sup>o</sup>)



19290 WILLIAMSBURG-R  
Q27 (10x20cm) (3<sup>15</sup>/<sub>16</sub>x7<sup>7</sup>/<sub>8</sub>"<sup>o</sup>)  
96 patterns



19291 WILLIAMSBURG-M  
Q27 (10x20cm) (3<sup>15</sup>/<sub>16</sub>x7<sup>7</sup>/<sub>8</sub>"<sup>o</sup>)  
96 patterns



19292 WILLIAMSBURG-H  
Q27 (10x20cm) (3<sup>15</sup>/<sub>16</sub>x7<sup>7</sup>/<sub>8</sub>"<sup>o</sup>)  
96 patterns



19288 WILLIAMSBURG-S  
Q27 (10x20cm) (3<sup>15</sup>/<sub>16</sub>x7<sup>7</sup>/<sub>8</sub>"<sup>o</sup>)  
96 patterns



19289 WILLIAMSBURG-G  
Q27 (10x20cm) (3<sup>15</sup>/<sub>16</sub>x7<sup>7</sup>/<sub>8</sub>"<sup>o</sup>)  
96 patterns



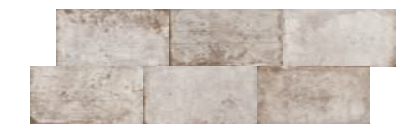
6 patterns of 96



6 patterns of 96



6 patterns of 96

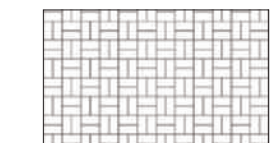
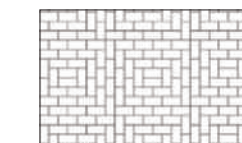
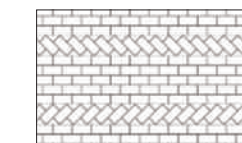


6 patterns of 96



6 patterns of 96

Examples of possible combinations.  
Ejemplos de posibles combinaciones.



## TECHNICAL CHARACTERISTICS

|  | CERAMIC | SHOWER WALL | SHOWER FLOOR | INDOOR | OUTDOOR | SHADE VARIATION | MATT | GLOSS | HANDMADE DECORS | CLEANING NON-ABRASIVE | MESH | FLOOR TRAFFIC | ANTISLIP | SELF UNIT | SELF m <sup>2</sup> | PIECES m <sup>2</sup> | PIECES sq ft | PIECES BOX | m <sup>2</sup> BOX | sq ft BOX | WEIGHT BOX (kg) | WEIGHT BOX (lb) | BOXES PALLET | m <sup>2</sup> PALLET | sq ft PALLET | CHIP SIZE | THICKNESS (mm) | THICKNESS (inch) |
|--|---------|-------------|--------------|--------|---------|-----------------|------|-------|-----------------|-----------------------|------|---------------|----------|-----------|---------------------|-----------------------|--------------|------------|--------------------|-----------|-----------------|-----------------|--------------|-----------------------|--------------|-----------|----------------|------------------|
|  |         |             |              |        |         |                 |      |       |                 |                       |      |               |          |           |                     |                       |              |            |                    |           |                 |                 |              |                       |              |           |                |                  |
|  | •       | •           | •            | •      | •       | •               | •    | •     | •               | •                     | •    | •             | •        | •         | •                   | 50                    | 4.65         | 25         | 0.5                | 5.38      | 9.2             | 20.24           | 90           | 45                    | 464.38       | 10        | 0.39           |                  |
|  | •       | •           | •            | •      | •       | •               | •    | •     | •               | •                     | •    | •             | •        | •         | 50                  | 4.65                  | 10           | 0.2        | 2.15               | 4.5       | 9.9             | 96              | 45           | 464.38                | 10           | 0.39      |                |                  |

## PACKING