



Villeroy & Boch
1748



OUTDOOR TILES 30





Impressive all-rounder:

OUTDOOR TILES 30

Practicality meets aesthetics: Striving to meet technical demands while achieving high-quality design, the OUTDOOR TILES 30 collection throws its full weight into the balance and becomes an all-round talent.

The attractive *vilbostone* porcelain stoneware tiles are 30 mm thick and meet all outdoor requirements. They are an excellent choice for terraces, walkways, balconies, carports, public spaces and passage ways, providing them with a durable covering in a timeless design.

Their decisive advantages result from the additional mass provided by the 30 mm thickness. This makes *vilbostone* porcelain stoneware tiles almost indestructible and equally straightforward in use, as the highly breakproof tiles can even be laid safely on less firm foundations.

With various surface designs, colours and formats available, the collection harmonises well with all manner of architectural styles. Optional angled stair treads give stairways and steps in outdoor areas sophisticated elegance.

An additional advantage when laying tiles: The 30 mm thick all-rounders are suitable for conventional or loose laying on a range of foundations.

**STYLE:**

Matching the appearance of interiors with balconies, terraces, pathways, entrances and other outdoor areas in private homes and public buildings

**MATERIAL:**

- *vilbostone*, high-quality, scratch- and abrasion-proof 30 mm thick brand porcelain stoneware tiles
- One-piece body: 50 % more material compared to 20 mm tiles
- Greater breaking strength: 2.5 x higher than 20 mm tiles

**FROST-PROOF:**

Frost-proof and weather-resistant when laid professionally

**COLOUR-FAST:**

No changes in colour as a result of sunlight

**EASY TO CLEAN:**

- Surface-sealed in the factory with *vilbostoneplus* to prevent stains
- final impregnation of the tiles is unnecessary

**NON-SLIP:**

Non-slip class R11/B for outdoor areas

**EDGE FORM****• RECTIFIED EDGES:**

- Cut precisely to size
- Consistent joint pattern
- Visible edges are resistant to knocks

• NATURAL EDGES:

- Slightly rounded production edge
- Natural-looking joint pattern
- Visible edges are resistant to knocks

**TILE LAYING ADVANTAGES:**

Can be laid on various foundations: even loose laying is a perfect solution



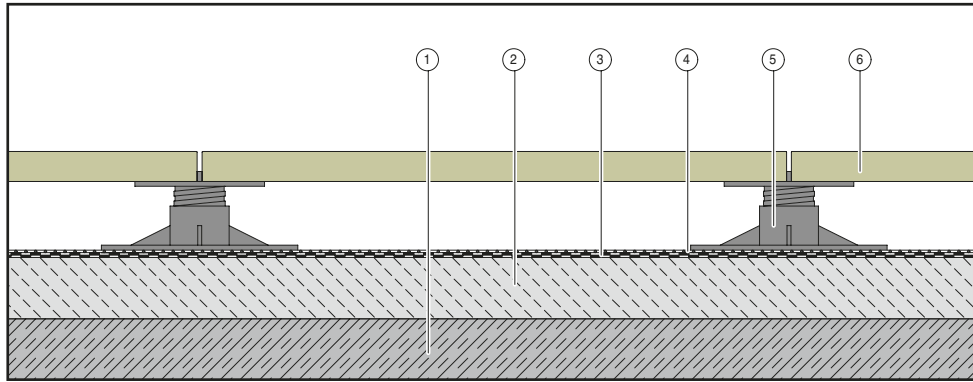






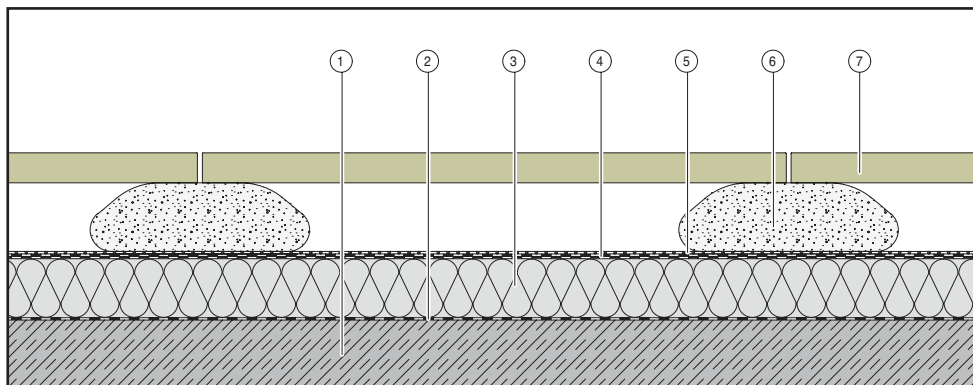
INSTALLATION METHODS

Laying on gravel beds or drainage mortar with contact layer



Loose laying on pile foundations on underground floor slab or concrete cantilever slab

- ① Uncovered floor
- ② Sloping screed
- ③ Seal in accordance with DIN 18195
- ④ Protective mat
- ⑤ Pile foundations
- ⑥ OUTDOOR TILES



Loose laying on mortar bags on thermally-insulated, flat-roof construction

- ① Uncovered floor
- ② Vapour barrier
- ③ Tapered insulation
- ④ Seal in accordance with DIN 18195
- ⑤ Separation layer / Protective mat
- ⑥ Mortar bags
- ⑦ OUTDOOR TILES

Advantages:

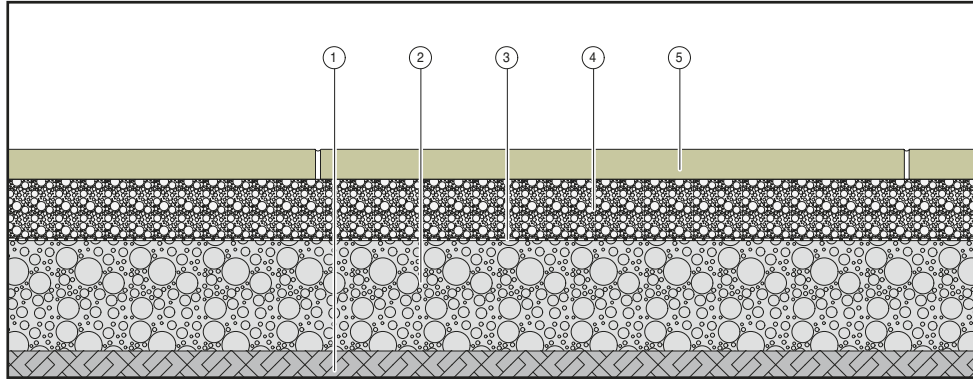
- Suitable for laying on top of existing coverings if the resulting overall height meets requirements
- Both laying variants can be performed quickly
- When laid on pile foundations or mortar bags, replacing individual OUTDOOR TILES is quite straightforward
- This also allows for the concealment of cables, pipes etc. under the structure

Laying the tiles:

- Prepare the substrate with a slope of at least 2% and seal in accordance with DIN 18195
- In order to protect against mechanical impairment, a protective mat should also be installed
- A vapour barrier is required above heated rooms
- Place the pile foundations (with integrated spacers) or mortar bags in the desired grid and align horizontally
- Lay the OUTDOOR TILES by placing them around the spacers with approx. 5 mm wide joints
- If higher loads are expected, it is recommended that support also be provided beneath the centre of each tile

INSTALLATION METHODS

Laying on gravel beds or drainage mortar with contact layer



Loose laying on gravel bed

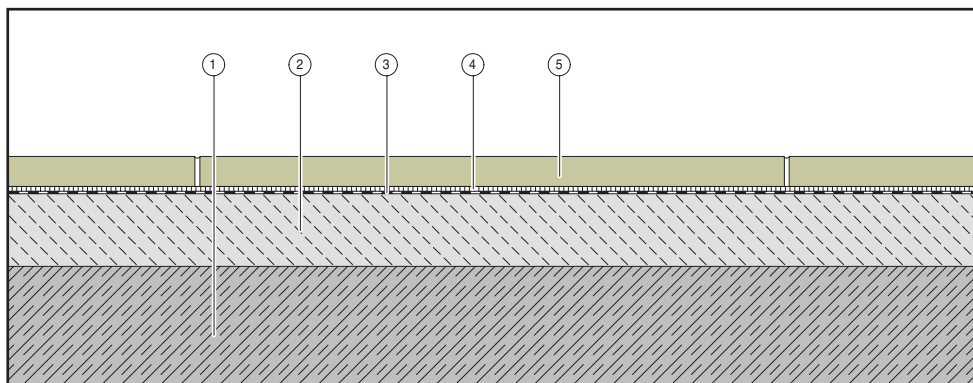
- ① Natural soil
- ② Rough gravel support
- ③ Water-permeable covering
- ④ Gravel bed or drainage mortar with contact layer
- ⑤ OUTDOOR TILES

Advantages:

- Suitable for accessible ground-level terraces
- It is possible to simply lay the tiles on concrete slabs or base plates, or on natural, load-bearing substrates
- When laid on gravel beds, replacing individual tiles is quite straightforward

Laying on natural soil:

- Prepare the substrate with a slope of at least 2 % and ensure that it is sufficiently compacted
- The 10 - 30 cm thick mineral supporting layer, comprising mixed gravel, for example, should have a grain size of approx. 0/45 to 0/56 mm
- Application of a water-permeable covering is required
- Create a 3 - 5 cm thick gravel bed that is able to drain / at least 5 cm with drainage mortar
- Lay the OUTDOOR TILES with approx. 5 mm wide joints, check for unevenness and level/shift if necessary
- If drainage mortar is used, a suitable contact layer must be applied to the back of the tiles before laying.
- Fill joints with water-permeable joint sand



Fixed laying in a mortar bed on underground floor slab or concrete cantilever slab

- ① Floor slab
- ② Sloping screed
- ③ Composite seal in acc. with DIN 18531-5
- ④ Mortar bed
- ⑤ OUTDOOR TILES

Advantages:

- Suitable for terraces and balconies with low overall heights
- Harmonises well with similar indoor floor coverings

Laying the tiles:

- Prepare the substrate with a slope of at least 2% and seal in accordance with the ZDB leaflet “Composite seals”
- If necessary, apply an additional levelling coat in the event that the deviations in height are too great
- Lay the tiles with approx. 5 mm wide joints in a joint-coordinated pattern (cross joints) using a hydraulically setting thin-bed mortar (Group C2 S2)
- Carry out jointing with hydraulic hardening joint mortar
- The space between the settlement joints in a width of approx. 5 mm can, depending on the expected thermal expansion pursuant to the ZDB flyer, be between 2 and 5 m.

TUCSON OUTDOOR 30



60 x 60 cm



60 x 60 cm



60 x 60 cm

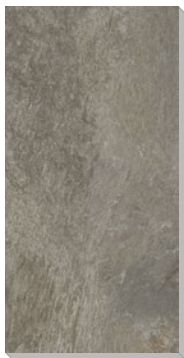


60 x 60 cm

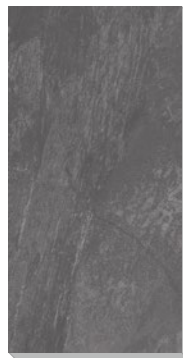


Article number	2936	30 mm	2936	30 mm	2939	30 mm	2939	30 mm
Product group	RN10		RN60		RN10		RN60	
Product group	Basic tile		Basic tile		Basic tile		Basic tile	
Dimensions (mm)	600 x 600 x 30 mm		600 x 600 x 30 mm		595 x 595 x 30 mm		595 x 595 x 30 mm	
Colour	light rock		warm rock		light rock		warm rock	
Finish	matt Fresh stone structure relief vilbostoneplus		matt Fresh stone structure relief vilbostoneplus		matt Fresh stone structure relief vilbostoneplus		matt Fresh stone structure relief vilbostoneplus	
Material	Porcelain stoneware		Porcelain stoneware		Porcelain stoneware		Porcelain stoneware	
Unit of measure	piece 24,4 kg 1 pce		Piece 24,4 kg 1 pce		Piece 24 kg 1 pce		Piece 24 kg 1 pce	
Per box	1 piece (loose) 24,4 kg 1 pce		1 Piece (loose) 24,4 kg 1 pce		1 Piece (loose) 24 kg 1 pce		1 Piece (loose) 24 kg 1 pce	
Per pallet	44 piece 1073,6 kg 44 pce		44 Piece 1073,6 kg 44 pce		44 Piece 1056 kg 44 pce		44 Piece 1056 kg 44 pce	
Min. sales unit	full pallet		full pallet		full pallet		full pallet	
Berechnungseinheit	m ²		m ²		m ²		m ²	
Price group	P148		P148		P151		P151	

MY EARTH OUTDOOR 30



40 x 80 cm



40 x 80 cm



40 x 80 cm



40 x 80 cm



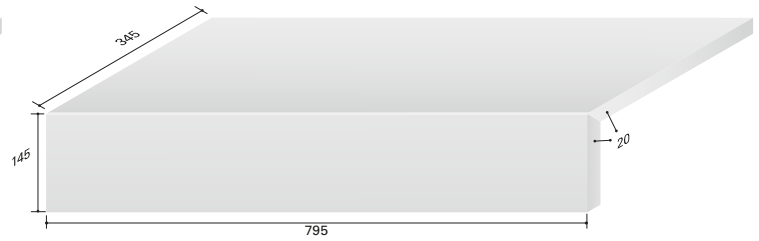
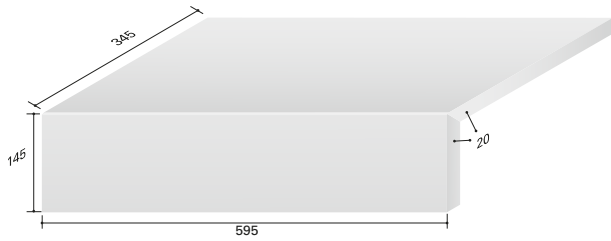
Article number	2934	30 mm	2934	30 mm	2938	30 mm	2938	30 mm
Product group	RU60		RU90		RU60		RU90	
Product group	Basic tile		Basic tile		Basic tile		Basic tile	
Dimensions (mm)	800 x 400 x 30 mm		800 x 400 x 30 mm		795 x 395 x 30 mm		795 x 395 x 30 mm	
Colour	grey multicolour		anthracite multicolour		grey multicolour		anthracite multicolour	
Finish	matt Fresh quartzite look relief vilbostoneplus		matt Fresh quartzite look relief vilbostoneplus		matt Fresh quartzite look relief vilbostoneplus		matt Fresh quartzite look relief vilbostoneplus	
Material	Porcelain stoneware		Porcelain stoneware		Porcelain stoneware		Porcelain stoneware	
Unit of measure	Piece 22,7 kg 1 pce		Piece 22,7 kg 1 pce		Piece 22,35 kg 1 pce		Piece 22,35 kg 1 pce	
Per box	1 Piece (loose) 22,7 kg 1 pce		1 Piece (loose) 22,7 kg 1 pce		1 Piece (loose) 22,35 kg 1 pce		1 Piece (loose) 22,35 kg 1 pce	
Per pallet	45 Piece 1021,5 kg 45 pce		45 Piece 1021,5 kg 45 pce		45 Piece 1005,75 kg 45 pce		45 Piece 1005,75 kg 45 pce	
Min. sales unit	full pallet		full pallet		full pallet		full pallet	
Berechnungseinheit	m ²		m ²		m ²		m ²	
Price group	P148		P148		P151		P151	

= Rectified
 = Frostproof DIN EN ISO 10545-12

= Anti-slip in workshop areas
 = Anti-slip in barefoot areas

= Tile thickness 30 mm
 = Shade variation

ANGLED TILE



Angled tile, produced to order, 595 or 795 mm wide. The depth of the tile and height of the edging can be specified as required. The angled tile can be used to edge a tiled area or as a stairtread.

Ordering: Art. 2899 + code for the range (RN/ RU/ ...) and specification of the requested colour and dimensions.

TECHNICAL PROPERTIES

Grouping: Table ZA.1.1 Outdoor floor covering



Characterization	Test according to DIN EN ISO	Requirements	Test result 40 x 80 cm	Test result 60 x 60 cm
Dimensions	10545-2	Compliance to the tolerances required	Passed	Passed
Surface quality	10545-2	min. 95 % free from visible defects	Passed	Passed
Water absorption % by weight	10545-3	≤ 0,5 / individual max. 0,6%	< 0,5	< 0,5
Modulus of rupture in N/mm ²	10545-4	min. 35 N/mm ²	≥ 45	≥ 45
Breaking strength	10545-4	min. 700N (thickness <7,5mm) min. 1.300N (thickness ≥7,5mm)	≥ 25.500	≥ 25.000
Breaking load	10545-4	Declared value	≥ 11.000	≥ 25.000
Resistance of impact (Measurement of the rebound coefficient)	10545-5	Test method available	≥ 0,55	≥ 0,55
Resistance to deep abrasion	10545-6	max 175 mm ³	≤ 145	≤ 145
Linear thermal expansion from ambient temperature to 100° C in K-1 :	10545-8	Test method available	Not tested	Not tested
Thermal shock resistance	10545-9	Test method available	Not tested	Not tested
Moisture expansion in mm/m	10545-10	Test method available	Not tested	Not tested
Frost resistance	10545-12	Required	Passed	Passed
Resistance to household chemicals and swimming pool salts	10545-13	min. class B	A	A
Resistance to acids and alkalis - low concentration	10545-13	The class has to be named by the producer.	LA	LA
Resistance to acids and alkalis - high concentration	10545-13	Test method available	HA	HA
Resistance to staining	10545-14	min. class 3	Class 5	Class 5
Release of lead and cadmium	10545-15	Test method available	Not tested	Not tested
Minor differences in colour	10545-16	Test method available	Not tested	Not tested
Determination of slip-resistance – commercial area	CEN/TS 16165	Statement according group, if agreed	R11	R11
Determination of slip-resistance – barefoot area	CEN/TS 16165	Statement according group, if agreed	B	B

V & B Fliesen GmbH

*Rotensteiner Weg
D-66663 Merzig
E-Mail: info@vb-fliesen.com*

9108-WI95-00-10 · 09/2018

Shades and dimensions subject to the usual tolerances. We reserve the right to make technical modifications to the range and alter colours.

